



# ECLASS STUDENT PORTAL

---

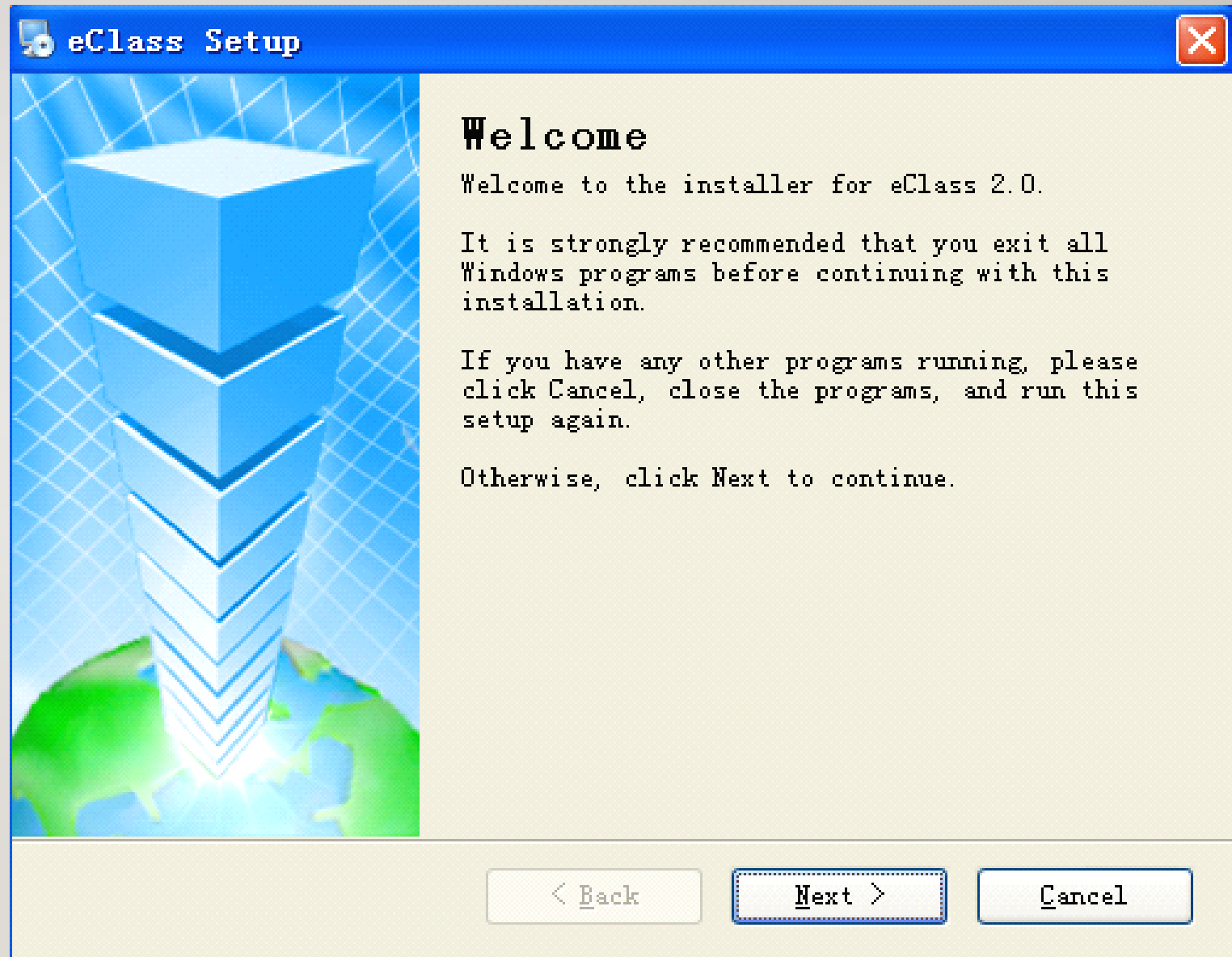
AL MAARIFA INTERNATIONAL PRIVATE SCHOOL

MANUAL GUIDE

## GET STARTED

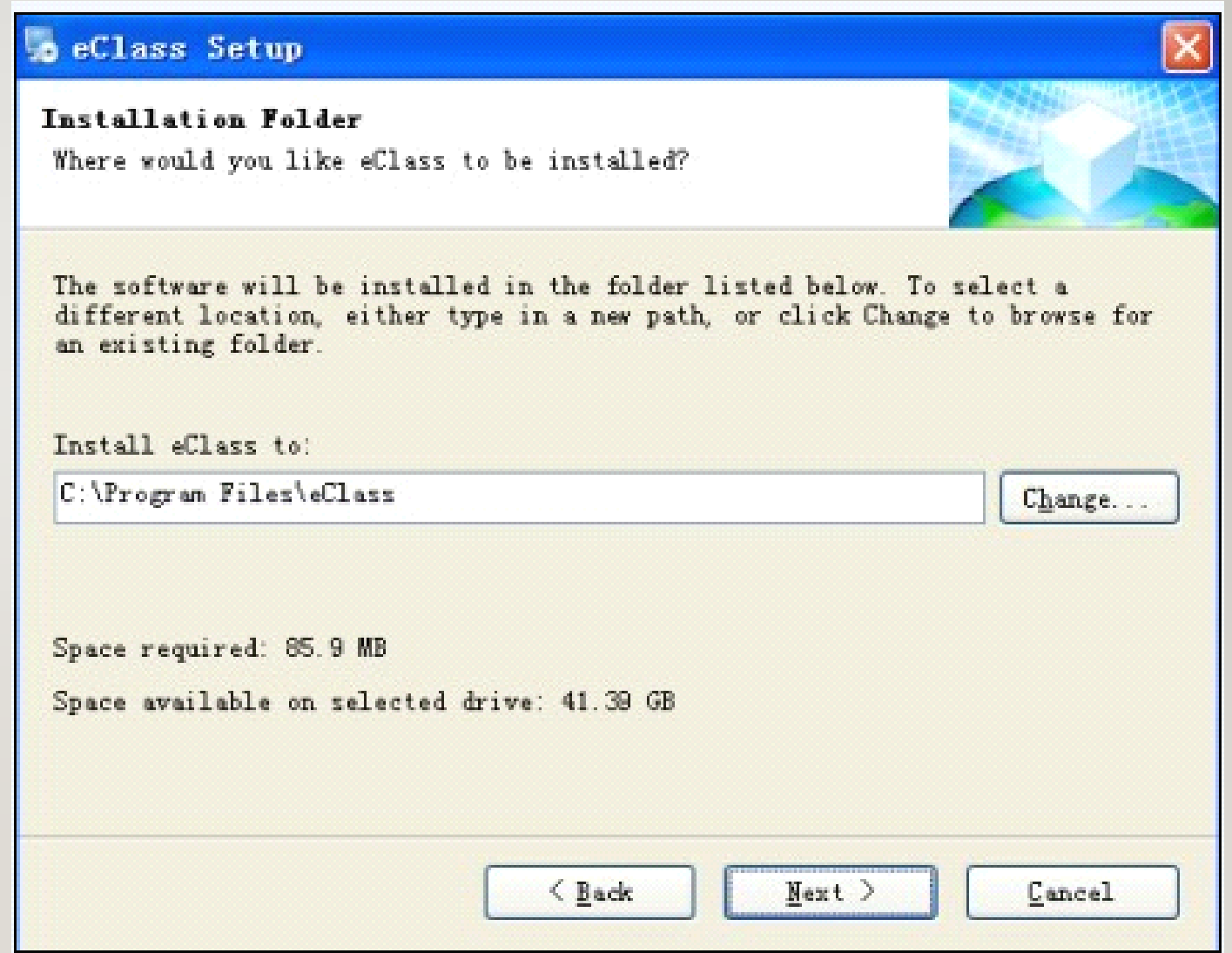
---

INSTALL ECLASS ON YOUR  
COMPUTER

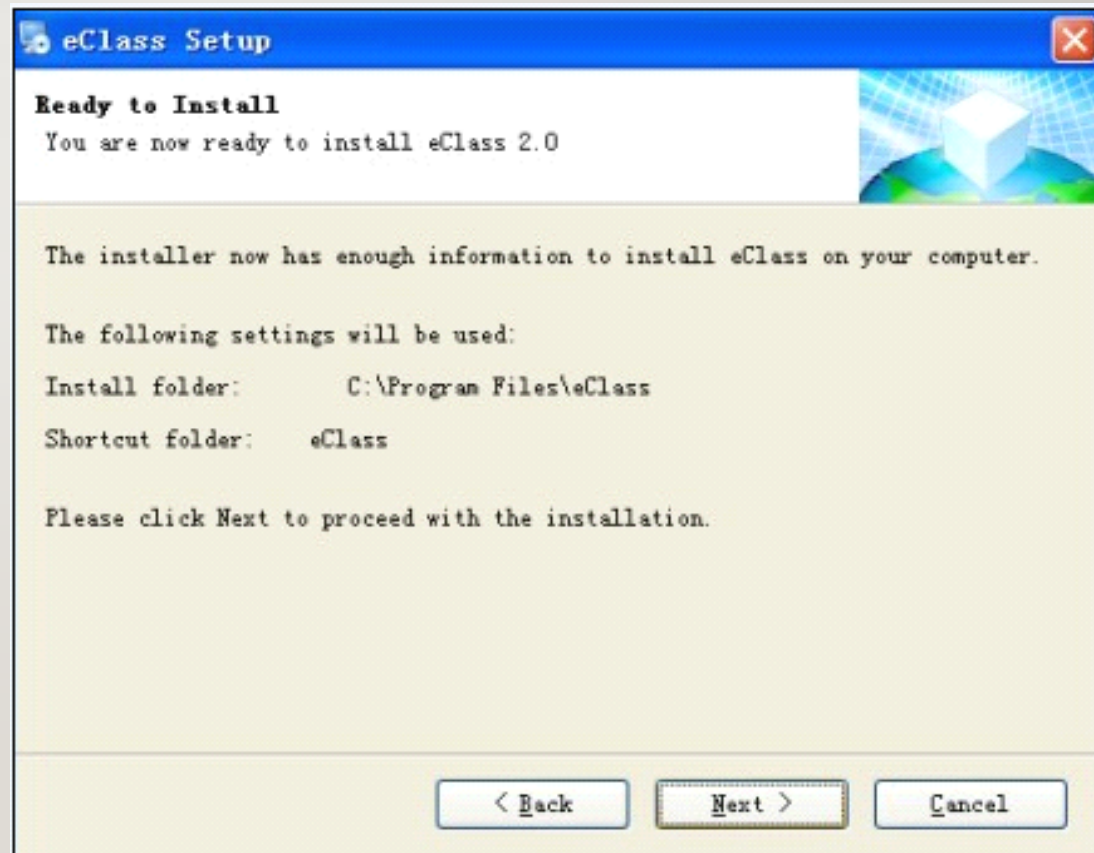
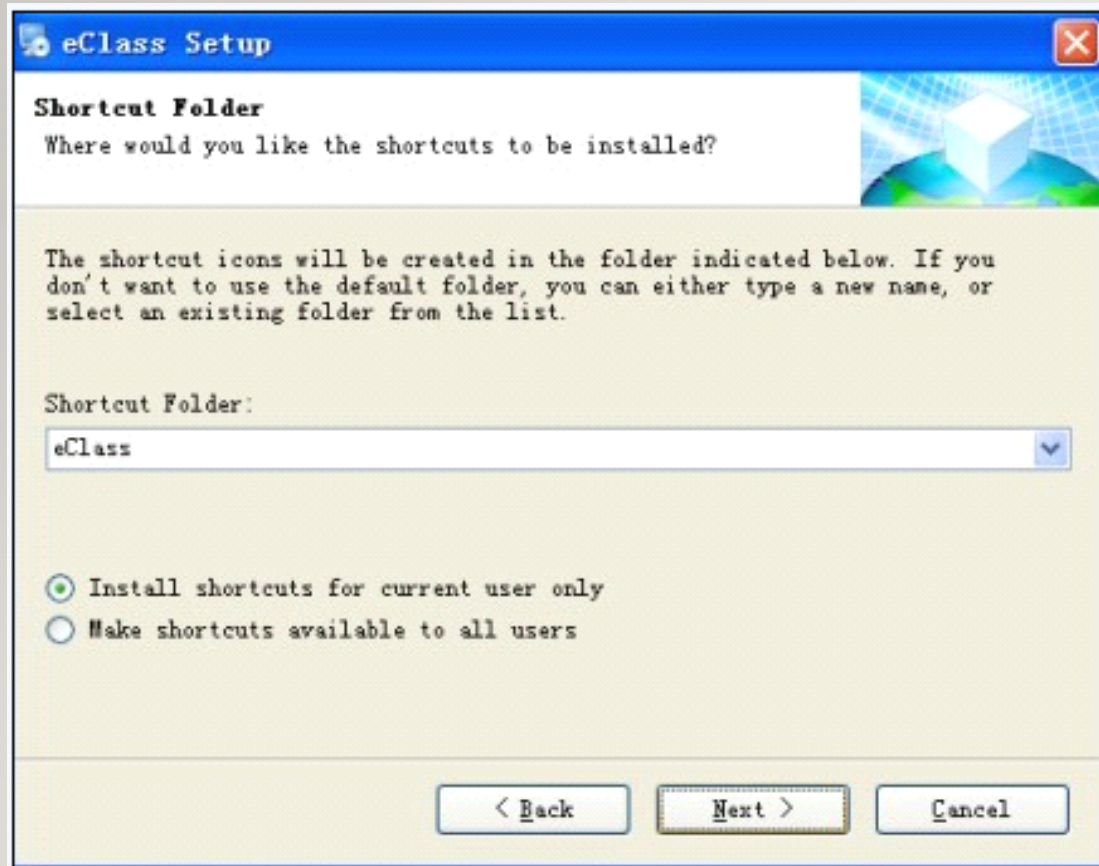


CLICK "NEXT" AND IT  
DISPLAYS AS FOLLOWS

---

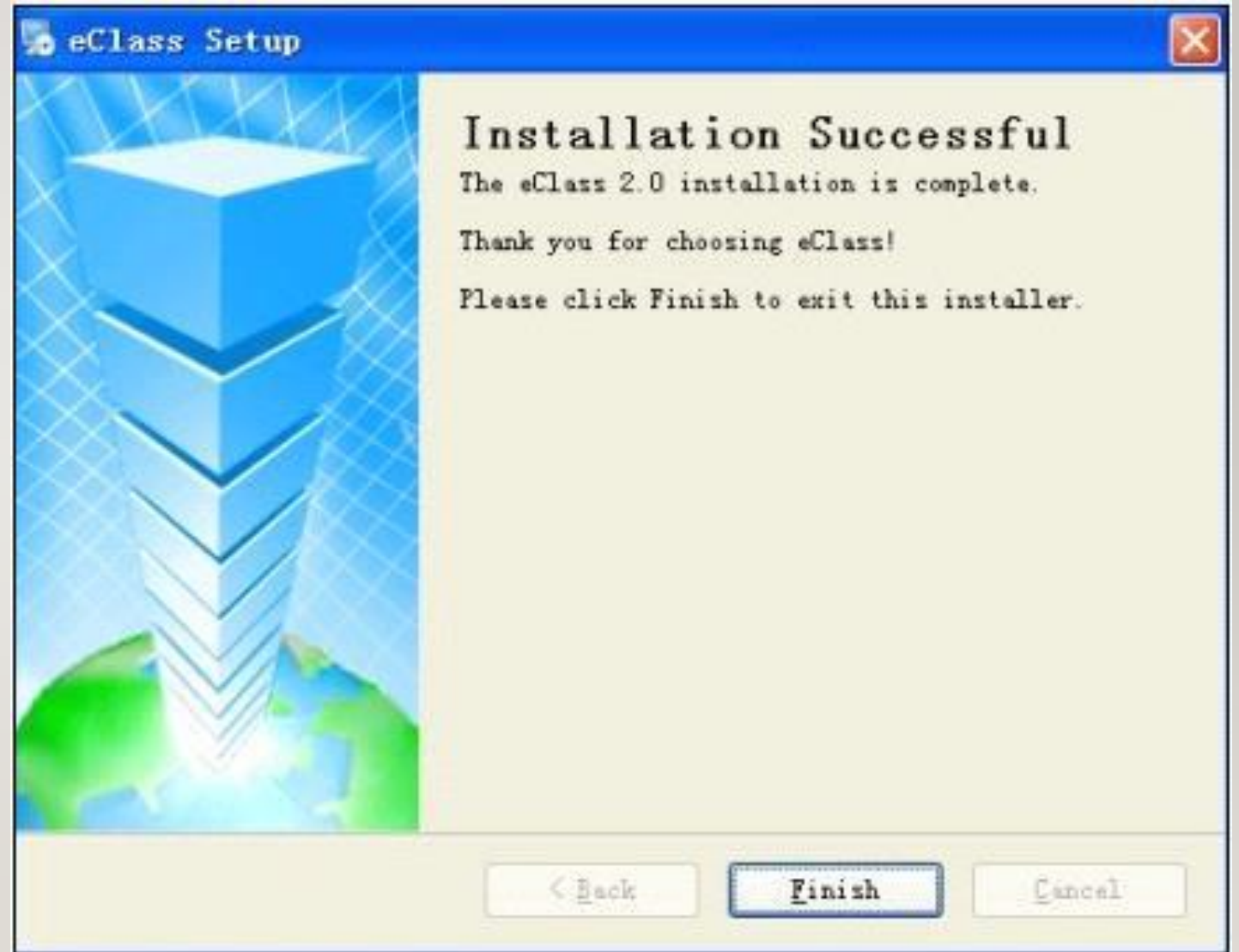


# CLICK "NEXT" AND IT DISPLAYS AS FOLLOWS:





- Click on finish
  - Connect the IWB USB cable to PC
  - After service Program is connected, will display on the right-down corner of PC. Right-click "Touch Server" icon
- 



# New page: icons

---

- Click on icon, a new pages is created.
- Next page/previous page and page contents preview
- Click the icon for the next page, icon for the previous page and the icon for the page contents preview.
- Undo and redo icon
- undo and redo icon, users can undo or redo their operations on the pages.



## PAGE ATTRIBUTE

---

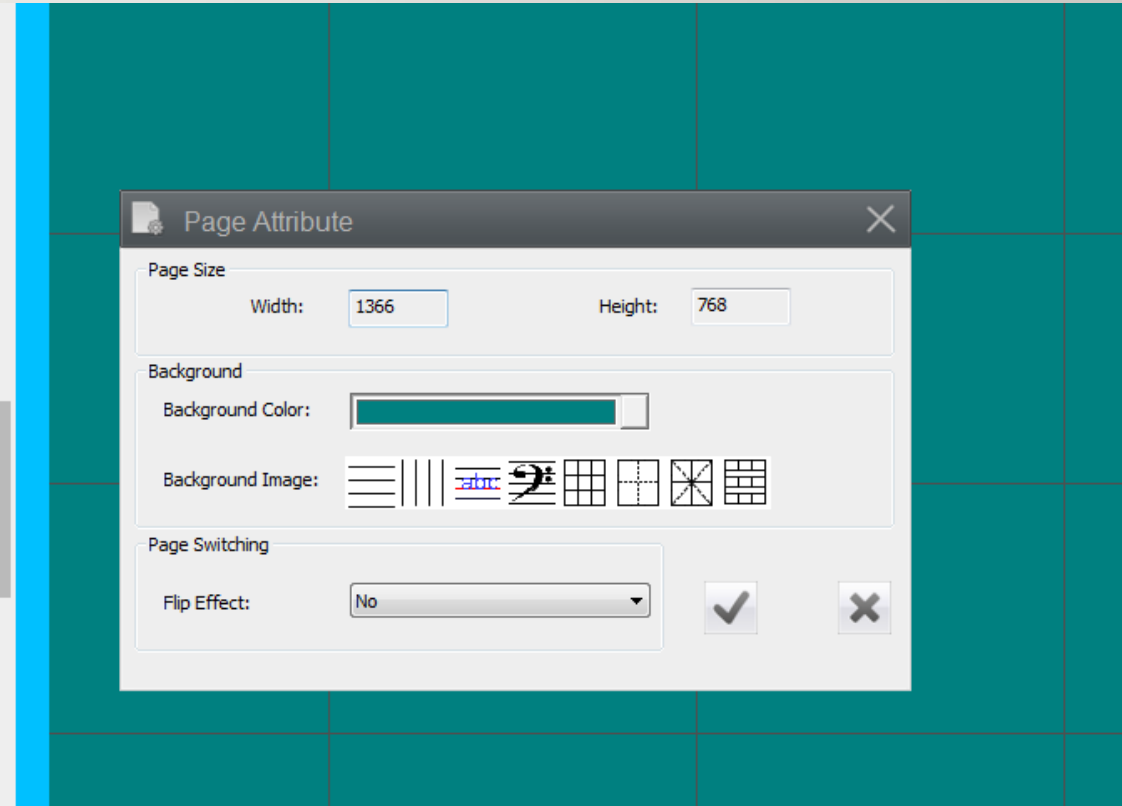
➤ Page size

➤ Back ground color and image

➤ Page switching

➤ Users can choose their favorite option and then click the icon to finish the new page setting.

➤ Click the to abandon the setting.





# ICONS ON THE PAGES:

---

WHITE PAGE

BLACK PAGE

PAGE BACKGROUND COLOR → 

CAPTURE BACKGROUND CONTENTS AND SAVE AS A NEW PAGE → 

INSERT A PICTURE AS PAGE BACKGROUND

CHANGE PAGE BACKGROUND PICTURE

DELETE PAGE BACKGROUND PICTURE

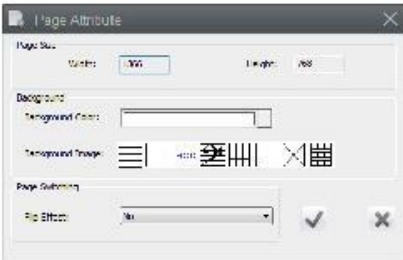
CLEAR ALL CURRENT PAGE CONTENTS

DELETE THE CURRENT PAGE

PREVIOUS PAGE

NEXT PAGE

PAGE CONTENTS OPERATION PLAY BACK

PAGE SETTING → 

The toolbar contains 15 icons: a white page, a black page, a color wheel, a screenshot of a page with icons, a picture of a landscape, a picture of a mountain, a picture of a mountain with a red 'X', a trash can, a document with a red 'X', a blue arrow pointing up, a blue arrow pointing down, a circular arrow, and a gear.